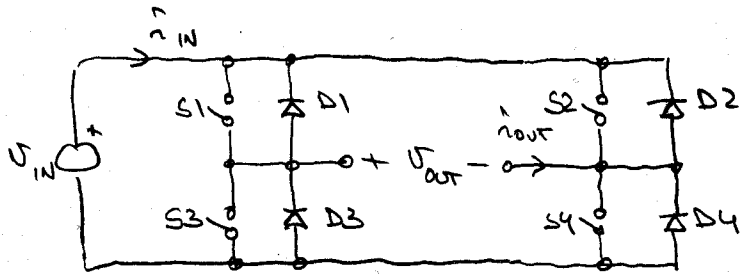
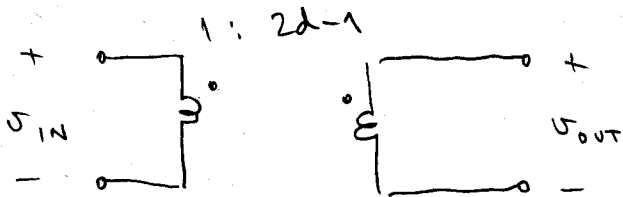
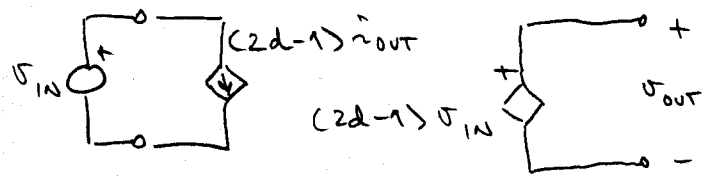


HANDOUT #3 , INVERTERS

SINGLE-PHASE INVERTER



AVERAGED CIRCUIT MODEL

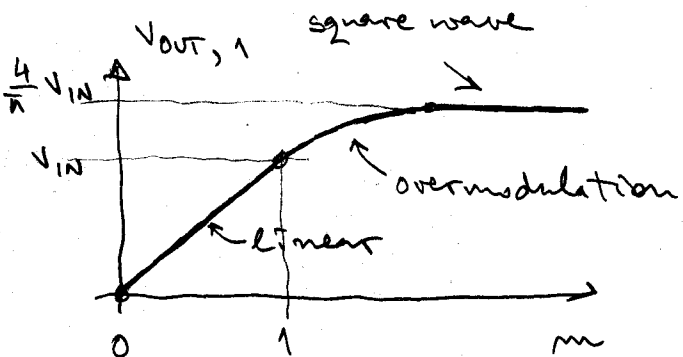


$$d(t) = \frac{1}{2} (1 + m \sin \omega t)$$

$$V_{OUT} = m V_{IN} \sin \omega t$$

$$3a \quad -1 < m < 1$$

OVERMODULATION



Six-Step Inverter

